

Installation Instructions

Pre-Installation Warranty:

It is the duty of the installer, whether professional or DIY (do-it-yourself), to inspect all flooring before installation. If the installer or buyer feels the flooring is the wrong color, improperly manufactured, has finish problems, is the wrong color or is the wrong gloss level, do **NOT** install the flooring. Immediately contact the retailer from which the flooring was purchased. No claim will be accepted for flooring which is visibly wrong, if such flooring is installed. Installed flooring is deemed to be visibly acceptable. This warranty applies only to material that is in excess of this 5%. Lock and Go Flooring will replace or refund the purchase price of material deemed to be defective in excess of this 5%. PLEASE NOTE: It is the duty of the installer/buyer to judge the suitability of any piece for placement in an obvious area of the room. If you feel a piece is not suitable, either do not install it or install it in an inconspicuous place.

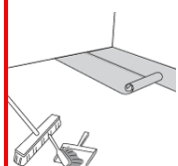
Preliminary Instructions:

Keep the boards at room temperature for at least 48 hours in unopened packages before beginning the installation. Relative humidity should be regulated between 40% and 60%. Temperature should be regulated between 74°F to 78°F in summer time. Temperature below 74°F runs the risk of reaching a dew point. This can adversely affect your flooring system. Winter temperature should be kept between 64°F and 68°F. For floor surfaces exceeding 1000 sf and/or lengths exceeding 30 feet and overlaps to new rooms and floor surfaces which do not join symmetrically, use expansion joints to divide the floor sections.

Surface Preparation:

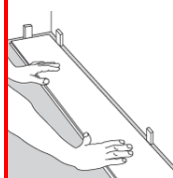
Lock and Go Flooring can be installed over most existing floors, e.g. wooden floors, PVC, concrete floors. Soft long-piled wall-to-wall carpets should be removed. Make sure that the surface is level, dry and even (< 1/8" per 6'). The supporting floor needs to be thoroughly dry, flat and clean.

- Concrete and light concrete floor max 75% relative humidity in the concrete.
- Calcium Chloride Test: The maximum moisture transfer must not exceed 3lbs. /1000 square feet within 72 hours after this test. Use three calcium chloride tests for every 1000 square foot of flooring installed.
- A "DRY SLAB", AS DEFINED BY THIS TEST, CAN BE WET AT OTHER TIMES OF THE YEAR. THIS ASTM F1869 TEST DOES NOT GUARANTEE A DRY SLAB.
- Dry and well secured plywood with moisture content less than 16% in joist and 13% on the interior plywood surface and 15% on the bottom side of the plywood.

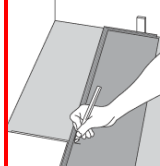


STEP 1) GETTING STARTED: Check the Lock and Go Floor boards and make sure that the surface has no transport damage before using them. After cleaning the subfloor, you can roll out the underlay material. Underlayment material recommended is the Lock and Go 3 in 1 or Ultimate Underlayment.

STEP 2) DOOR MOULDINGS AND SKIRTINGS: To adjust the door frame for the height of the floor, lay a board (with the decorative side down) next to the door molding and saw as shown in the figure. Then slide the floor board under the molding. Make sure you leave 1/2" expansion otherwise you lock the floor in. This could adversely affect your floor.

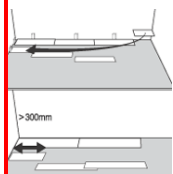
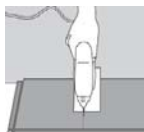


STEP 3) FIRST ROW: Begin laying the left-handed corner, tongue-side against the wall. Make sure you are placing the short side of the board 1/4" - 1/2" from the wall. The long side distance can be pushed into place when three rows have been placed. If the wall is uneven, the floorboards must be adapted to its contours. Remove the first row, cut the floorboards as required and then relay them by sliding them in at angle under the floorboards that are already in position.



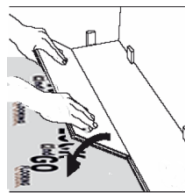
STEP 5) Place the final floorboard face down and the short side without the locking strip toward the wall. The distance to the wall must be 1/2" mark where the floorboard is to be cut.

STEP 6) CUTTING THE FLOORBOARDS: Place the floorboard face down on the work surface and cut to size using a jig-saw. Use a fine toothed type if you are using a hand saw (in the case, cut the floor board face up)

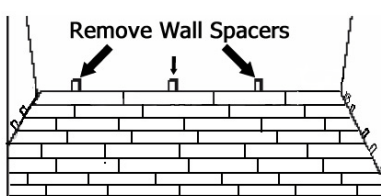
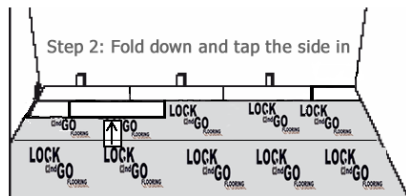


STEP 7) STARTING THE SECOND ROW: Use the cut piece from last board of the previous row to start the next row. This piece must be at least 12" long. If the piece is too short, start with a new board cut in half. Always ensure that the end joints are staggered at least 12".

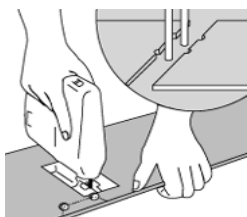
STEPS 8) CONTINUE LAYING THE FLOOR: Place the floorboard at an angle against the floorboard in the previous row, press forward and fold down at the same time. For floor surfaces exceeding 1000 sf and/or lengths exceeding 30 linear feet and overlaps to new rooms and floor surfaces which do not join symmetrically, use expansion joints to divide the floor sections. Proper expansion is critical in when installing a floating floor.



STEP 9) TO LAY THE LAST ROW: Measure and cut the board. Leave 1/2" from the wall. The expansion 3/8" expansion gap will be covered by quarter round.



STEP 10) HOLES FOR PIPES: Measure the diameter of the pipe and drill a hole that is 3/8" larger. Saw off a piece as shown in the figure and lay the board in place on the floor. Then lay the sawed-off piece in place.



Cleaning and Maintenance:

Lock and Go recommends vacuuming the floor with soft bristle tool and/or regular daily dust mopping. For cleaning your laminate floor use Bona Kemi Professional Stone, Tile and Laminate cleaner or Woodwise Cleaner, **Never wet mop your laminate floor or use steam mop to clean your floor.** Detail cleaning instructions are available at our website www.LockandGoFlooring.com. For any questions about Lock and Go Flooring products call 504-382-2331.

8.3 mm

Laminate Flooring

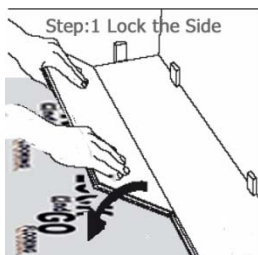
- **Glueless Installation**
- **Floating Installation**
- **20 Year Residential**

Finish Warranty

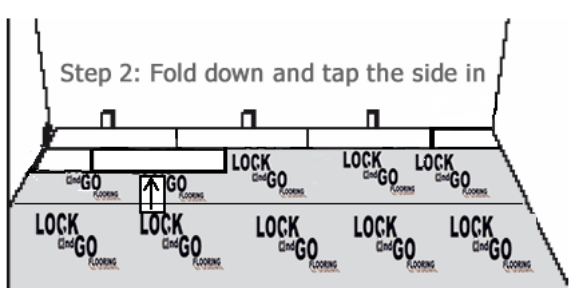
- **AC3 Rated Finish**
- **Anti Fade Finish**
- **Emissions E-1**
- **Style: Single Plank**
- **Bevel Edges**
- **HDF Core**

Easy As:

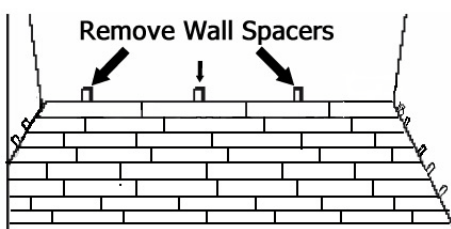
1.



2.



3.



Lock and Go Flooring

P.O. Box 55070

Metairie, LA 70055

(504) 382-2331

Fax (504) 309-6945

www.lockandgoflooring.com